



W  
A  
S  
A  
B  
I

和  
寂

The Japan Experience

The WASABI Texturizers belong to the latest development of the KAI Hair Stylist Scissors. 7 models are available from 7 teeth through to 38 teeth.

Die WASABI Texturizer Serie gehört zu den neuesten Entwicklungen von KAI. Erhältlich in sieben Versionen von 7 bis 38 Zähnen.

Les effileurs WASABI sont le résultat du plus récent développement des ciseaux KAI Hair Stylist. 7 modèles sont disponibles : à partir de 7 jusqu'à 32 dents.

Las Tijeras WASABI texturizadoras pertenecen al último desarrollo de KAI de tijeras para el profesional. Hay 7 modelos disponibles entre 7 dientes y 38 dientes.

W  
A  
S  
A  
B  
I  
和  
寂

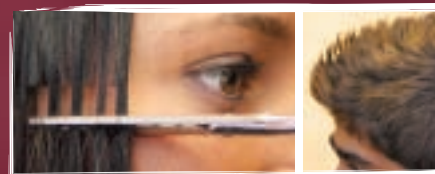
WST-207

>> 7 Teeth, 5,5"



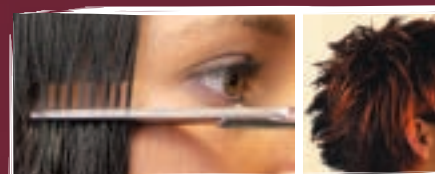
Cut

Effect



WST-215

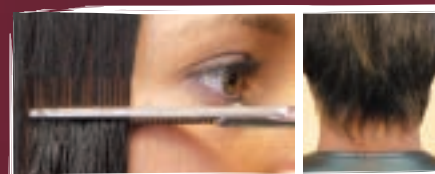
>> 15 Teeth, 5,5"



WST-230 F

>> 30 Teeth, 5,5", F-Type

Fuzzy

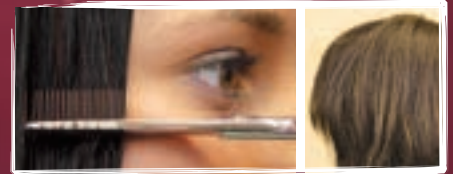


WST-230  
>> 30 Teeth, 5.5"

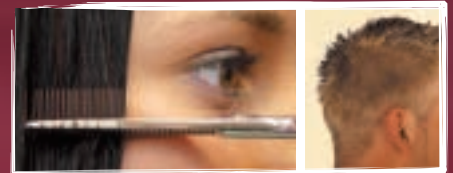


Cut

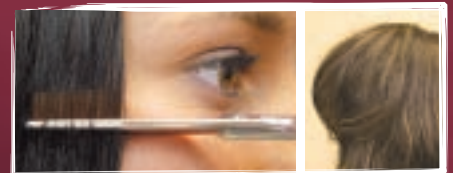
Effect



WST-230 B  
>> 30 Teeth, 5.5", B-Type



WST-238  
>> 38 Teeth, 5.5"



WST-238 B  
>> 38 Teeth, 5.5", B-Type

